

**SONGER.**  
**READY TO GO**  
**TO WORK.**



**WE ARE SONGER**

## **We are Songer**

Show up to work, every day. Be prepared to do the job right. Always be safety-minded. Never stop learning. And always go the extra mile. It's the same get-your-hands-dirty mindset that allowed Paul to succeed nationwide as a journeyman bricklayer after serving his country with distinction in World War II.

Songer Services stands today as a mirror of the man behind it; intelligent, dedicated, wise, personable, family-oriented, and steadfastly committed to being the best in the business, every day there's a job to be done.

**SONGER.**  
**THE COMPANY.**



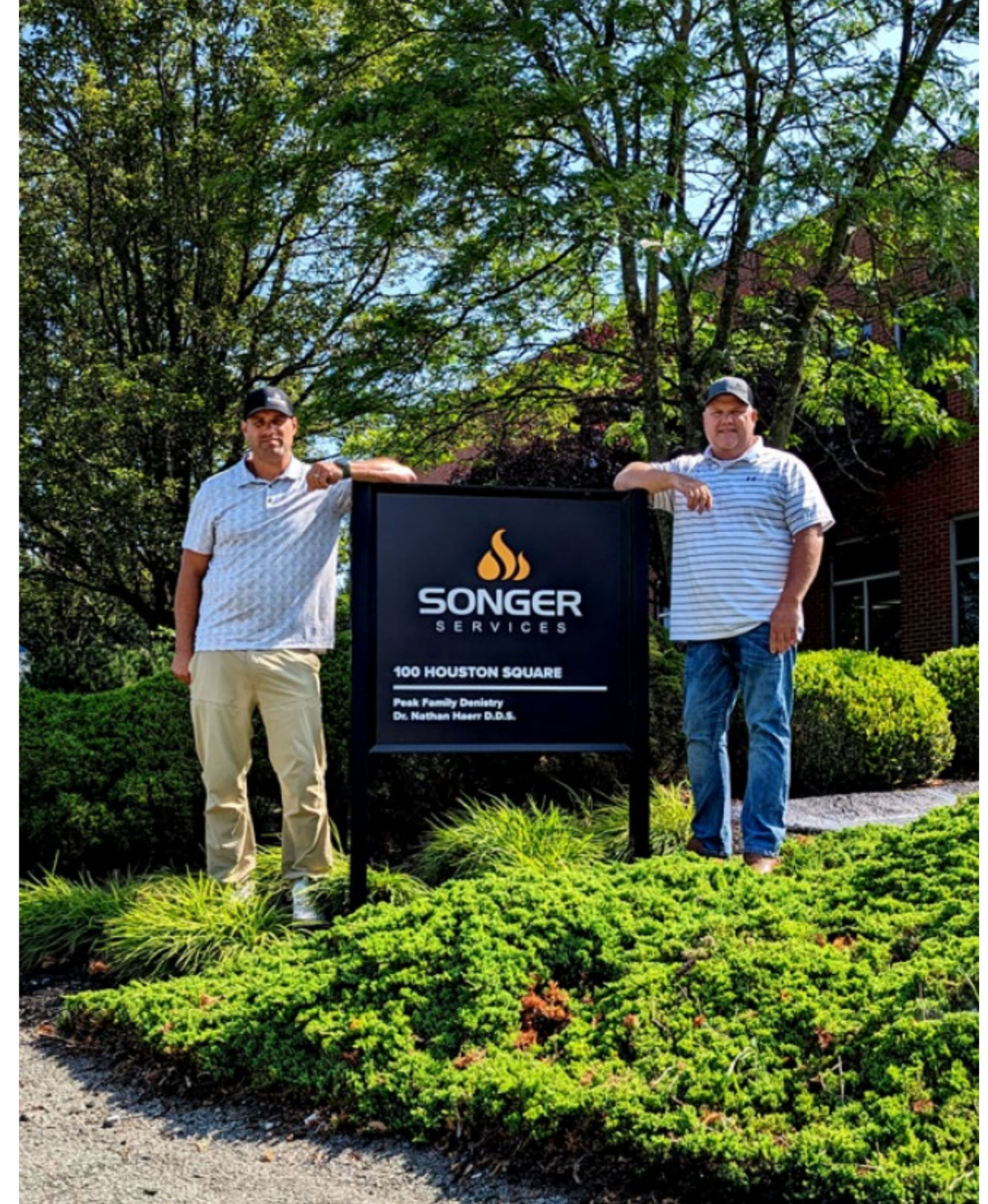
## WE ARE SONGER

# Our reputation is made and remade every day we're on the job.

Today's Songer is led by Paul's handpicked President & CEO Gregg Preteroti and COO Mike Arnold. Are we still experts in blast furnace, coke oven, boiler, and pressure vessel maintenance and repair? Certainly—since 2003, Songer Services has performed more blast furnace projects than any other company worldwide.

So whether it's delivering value-added repair and critical maintenance for integrated steel manufacturers, or tackling end-to-end industrial projects that combine planning and engineering with project management and heavy construction, you will find no better or more experienced or capable partner than Songer Services.

**SONGER.**  
**THE PEOPLE.**



**WE ARE SONGER**

## **Experienced Industry Professionals**

Our broad and deep industrial general contracting experience, our proven ability to lead, manage and execute end-to-end construction projects, and our veteran leadership in project planning and engineering knows how to get work done.

→ **Year Established: 2003**

→ **Permanent Staff: 220**

→ **Labor Type: Union**

**SONGER.**  
**THE PEOPLE.**

## **Leadership**

- **Gregg Preteroti**  
President/Chief Executive Officer
- **Mike Arnold**  
Executive Vice President/Chief Operations
- **Sean Ream**  
Chief Financial Officer
- **David Toennies**  
Vice President of Operations
- **Lauren Culbertson**  
Vice President of Engineering
- **Brad Cramer**  
Senior Vice President/Chief Legal Officer
- **Bert Rolley**  
General Manager – Southern Division
- **Terry L. Jackson**  
General Manager of Engineering
- **Glenn Reed**  
General Manager
- **Thomas Jarka**  
General Manager of Midwest
- **Rob A Razzano Jr.**  
Director – Health, Safety and Environment
- **Mike Hubbs**  
General Manager of Operations - Canada
- **Robert C. Hoover**  
Labor Relations & Human Resources
- **Tony Darin**  
Field Operations and Standards Coordinator



**SONGER.**  
**TRUSTED. CAPABLE.**  
**PARTNER.**



## RELATIONSHIPS

**We build complex things for the world's top-producing companies. But our most impressive builds are the ongoing relationships.**

We've learned that projects with customers lead to more projects with customers. The more we work together, the better we understand where our diverse talents make the most impact. Customers keep Songer involved in planning, execution, and maintenance jobs of all shapes and sizes.

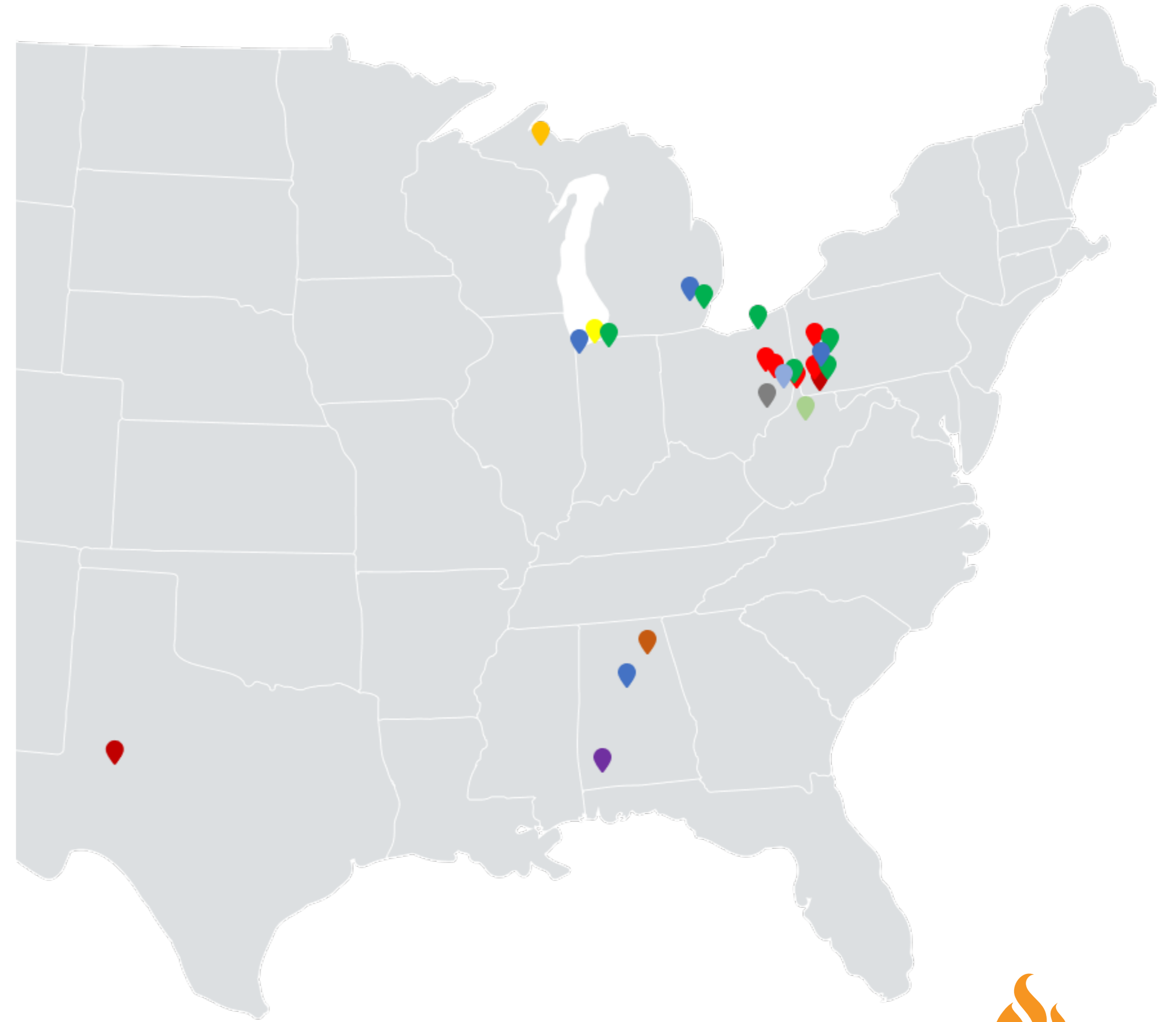
**SONGER.**  
**TRUSTED. CAPABLE.**



## RELATIONSHIPS

# Trusted On The Jobsite Every Day.

- United States Steel: Pittsburgh, PA, Gary, IN, Fairfield, AL, Detroit, MI
- MPLX: Evans City, PA, Houston, PA, Jewett, OH, Cadiz, OH, Dallas, WV
- Cleveland Cliffs: Burns Harbor, IN, Cleveland, OH, Weirton, WV, Butler PA, Dearborn, MI, Monessen, PA
- Escanaba: Upper Peninsula, MI
- JSW: Mingo Junction, OH
- Jupiter Aluminum: Beech Bottom, WV
- Outokumpu: Culvert, AL
- First Energy - Harrison, WV
- Blue Racer: OH
- Mueller: Albertville, AL
- Ozinga, Burns Harbor, IN
- Nacelle: PA, TX, ON



**SONGER.**  
**TRUSTED. CAPABLE.**



## EXTENDED CAPABILITIES

# The Self-Performing Companies Within The Company.

Old-fashioned values meet next-generation heavy industrial contracting needs. Each of our unique services operates like an individual Songer enterprise—always ready to work, obsessive about details, focused on craftsmanship, and mindful of budgets and bids—without ever sacrificing our core dedication to our trademarked safety protocols. In addition to our disciplines, we self-perform all crafts, eliminating the need for multiple subcontractors.

**SONGER.**  
**TRUSTED. CAPABLE.**

## Integrated Disciplines (All Crafts)

• Click links to browse disciplines

→ [Automation](#)

→ [Maintenance](#)

→ [Civil](#)

→ [Pipe Installation](#)

→ [Demolition](#)

→ [Quality Assurance & Control](#)

→ [Electrical](#)

→ [Refractory Installation](#)

→ [Engineering](#)

→ [Safety Management](#)

→ [Equipment Setting](#)

→ [Scaffolding](#)

→ [Fabrication](#)

→ [Steel Erection](#)

→ [Heavy Lifting](#)

→ [Surveying](#)

→ [Inspection](#)





**SONGER.**  
**CONSTRUCTION**  
**MANAGEMENT.**



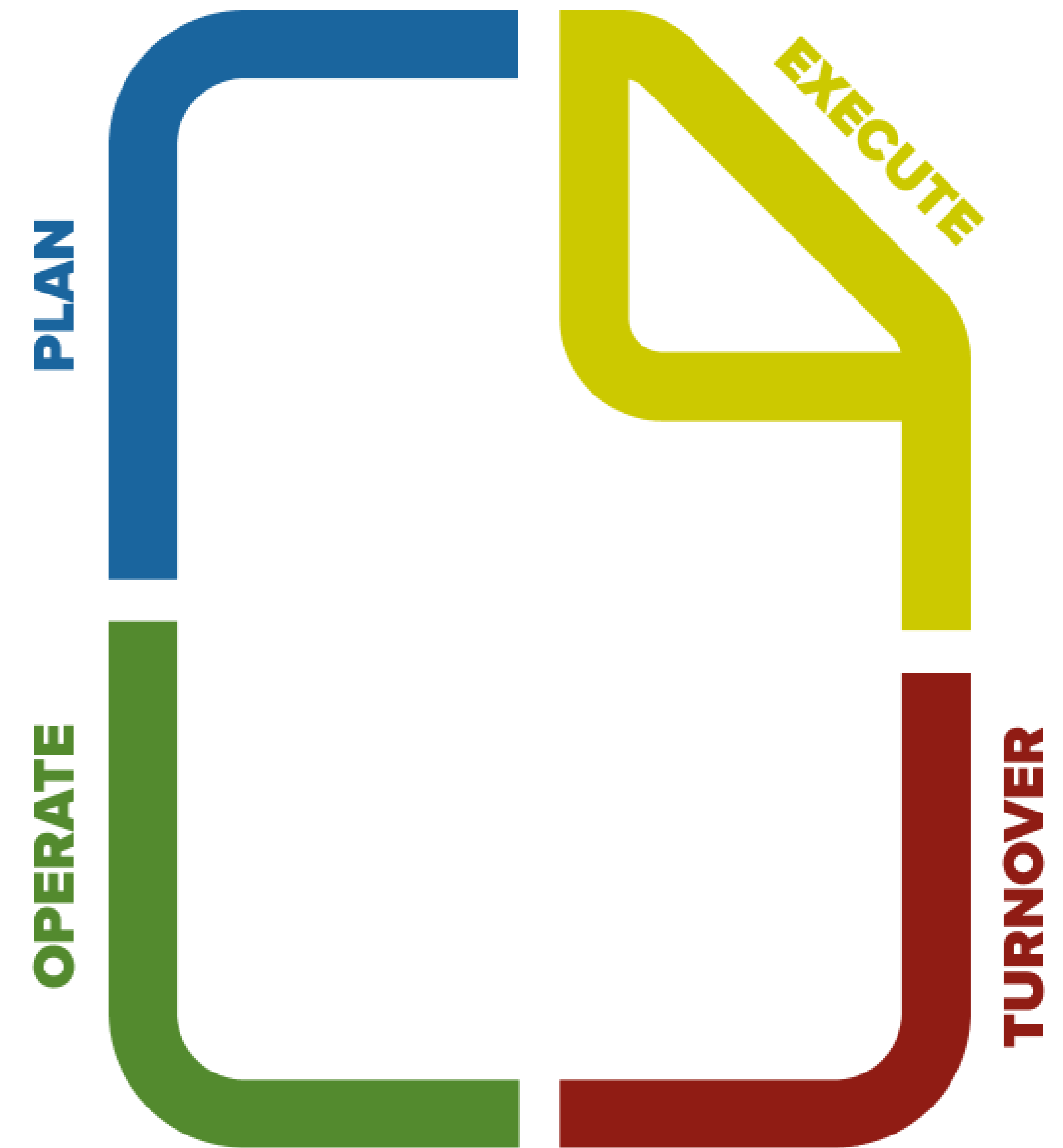
## COLLABORATION

# The start-to-finish Construction Management process.

Songer's no-nonsense, safety-minded approach to construction begins with a plan that's influenced by decades of experience. This plan dictates the execution phase and accounts for seamless turnover procedures.

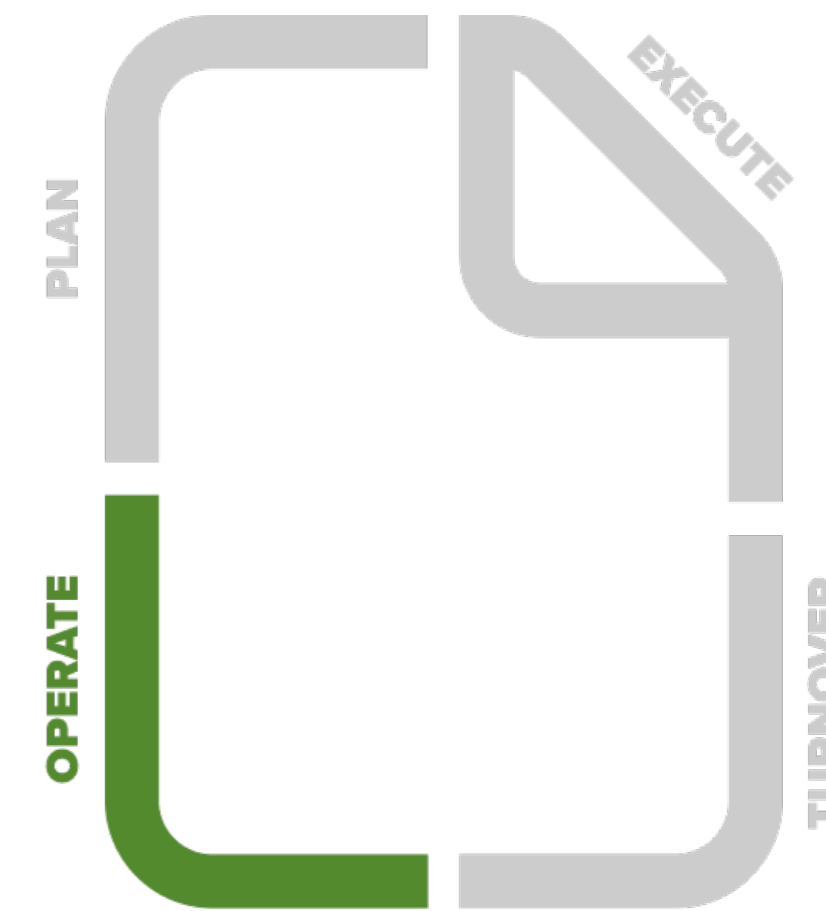
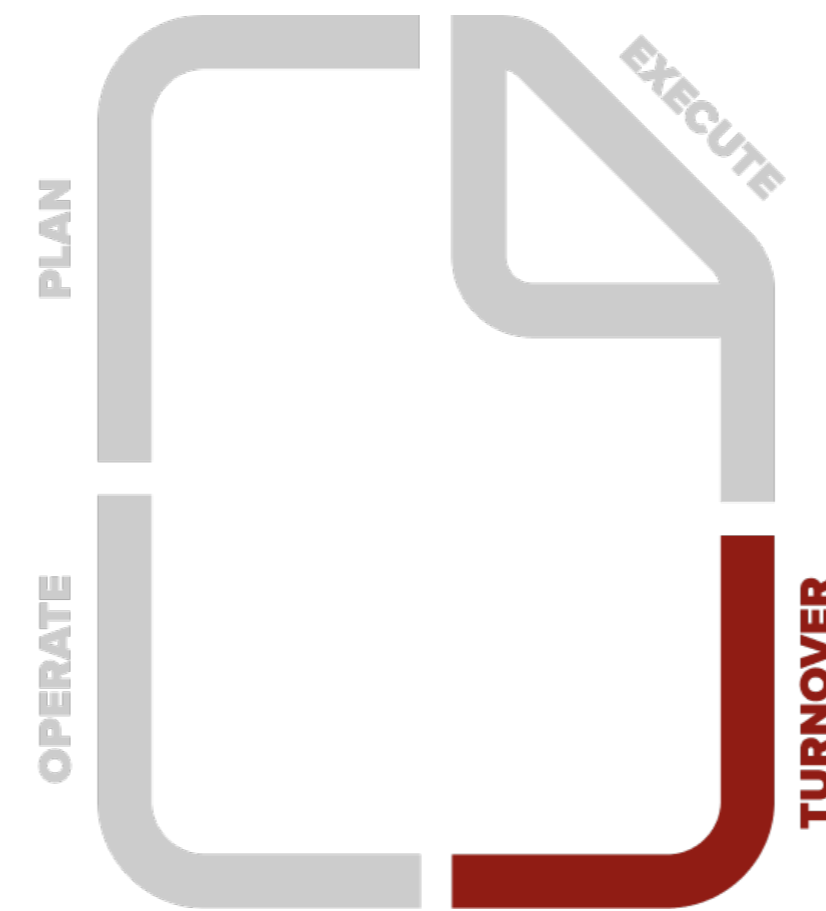
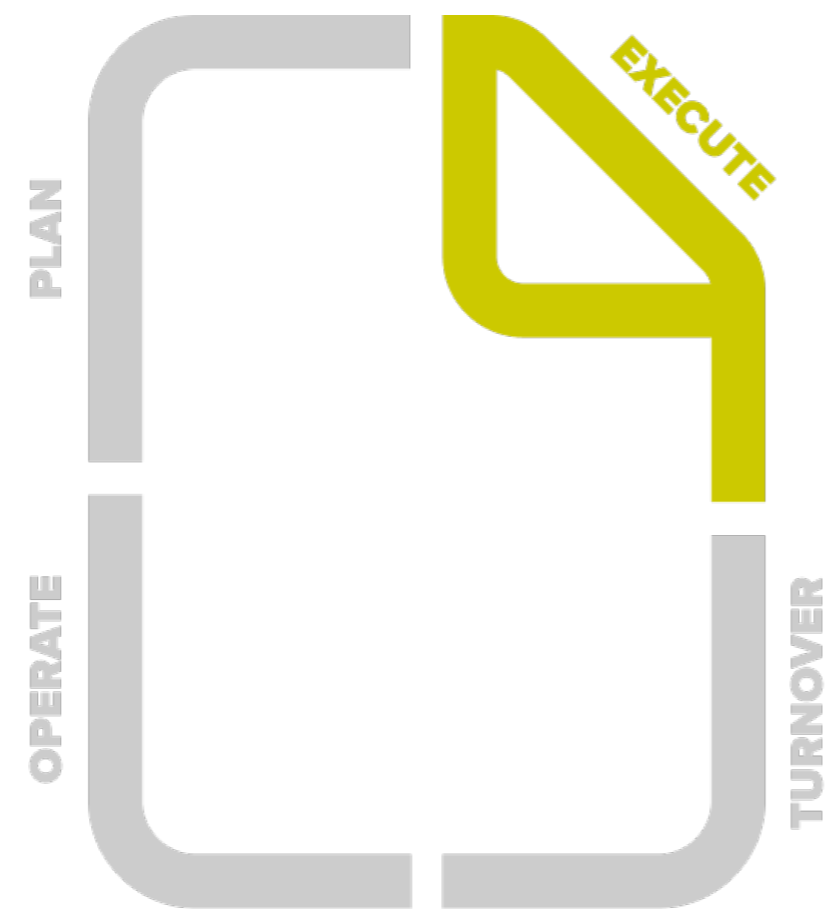
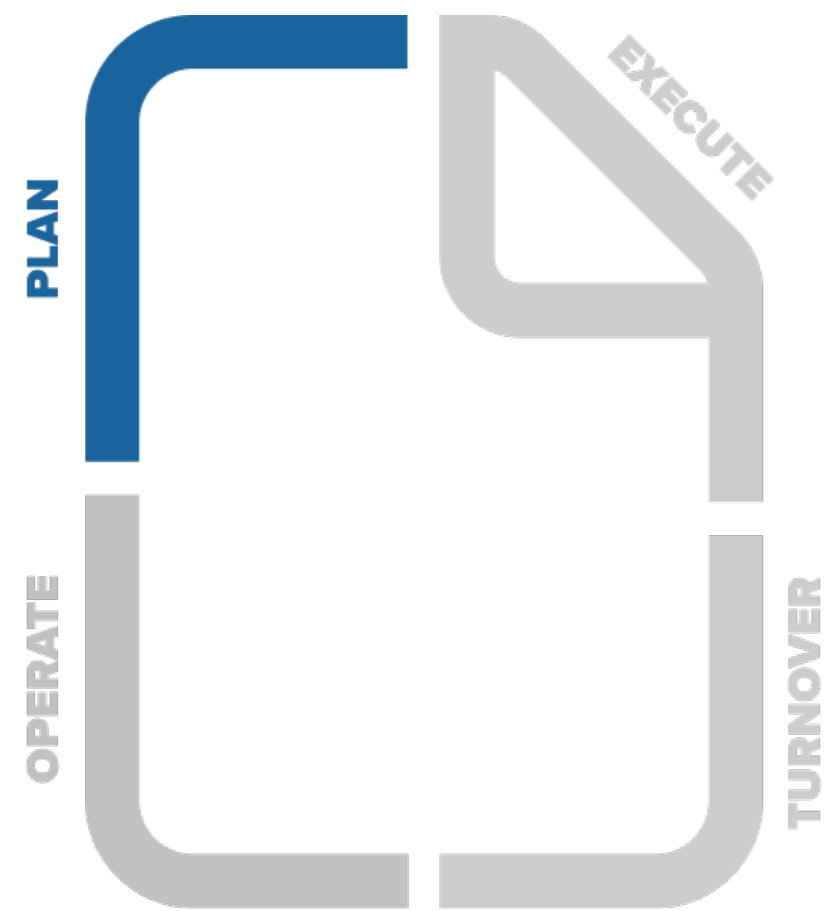
- Improve Safety
- Improve Schedules
- Decrease Total Installed Cost

**SONGER.**  
**PLAN & EXECUTE.**



## COLLABORATION

**The more we're involved the greater the impact we can provide throughout the project lifecycle.**



**SONGER.**  
**PLAN & EXECUTE.**

**SONGER.**  
**INNOVATION.**



## 3D MODELING

# Customized Inventory Management

We developed a system for managing a large inventory set across multiple storage locations.

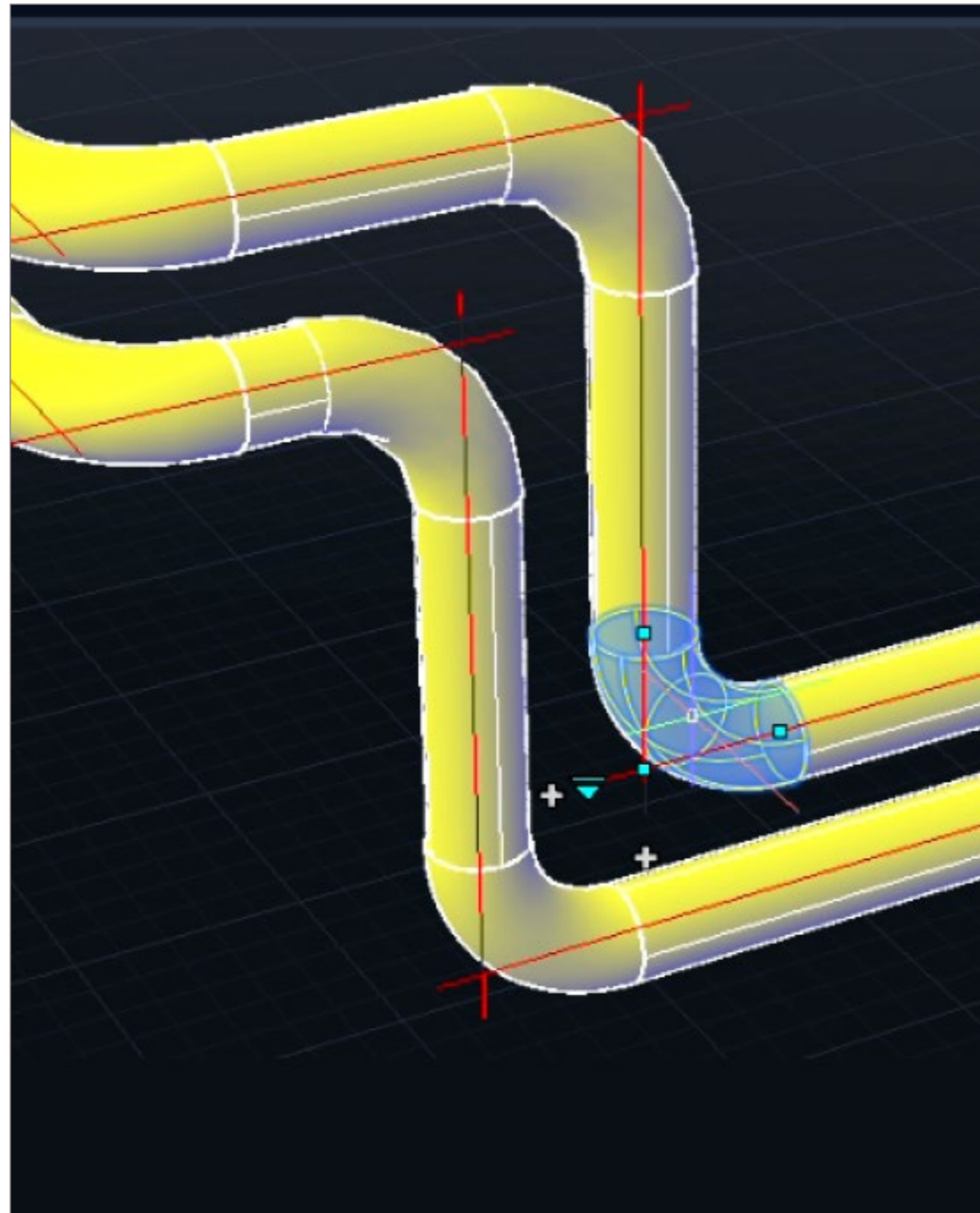
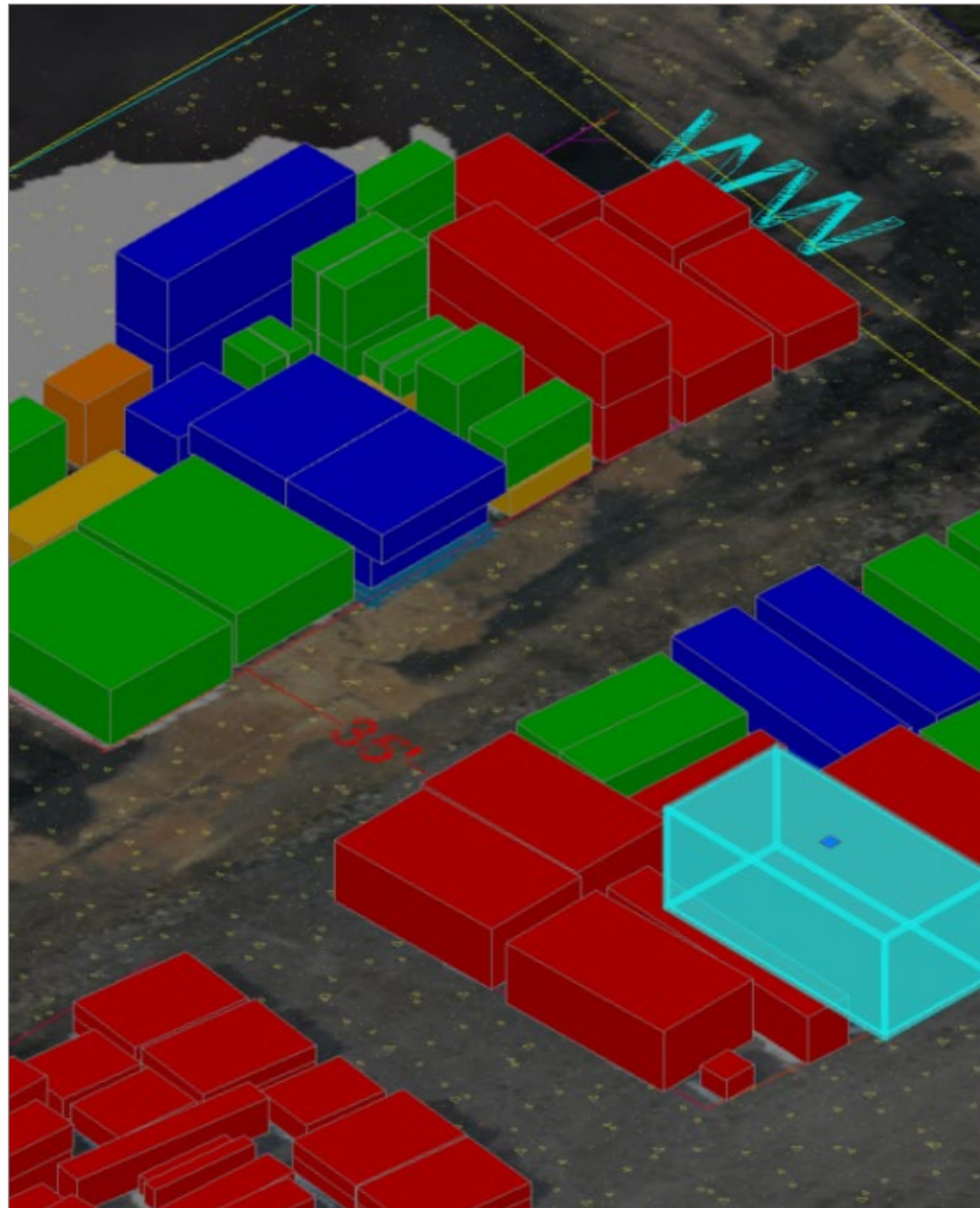
The easily searchable 3D and 2D model not only visually represents where items are located, it also contains all package-related information at the click of a button.



**SONGER.**  
**INNOVATION.**

  
**SONGER**  
SERVICES

## MATERIALS MANAGEMENT



## Saving Resources and Improving Response/Delivery Times.

### Quickly Understand:

- Priority/Need
- Dimensions, Weight and more
- Storage Requirements
- Movement Paths

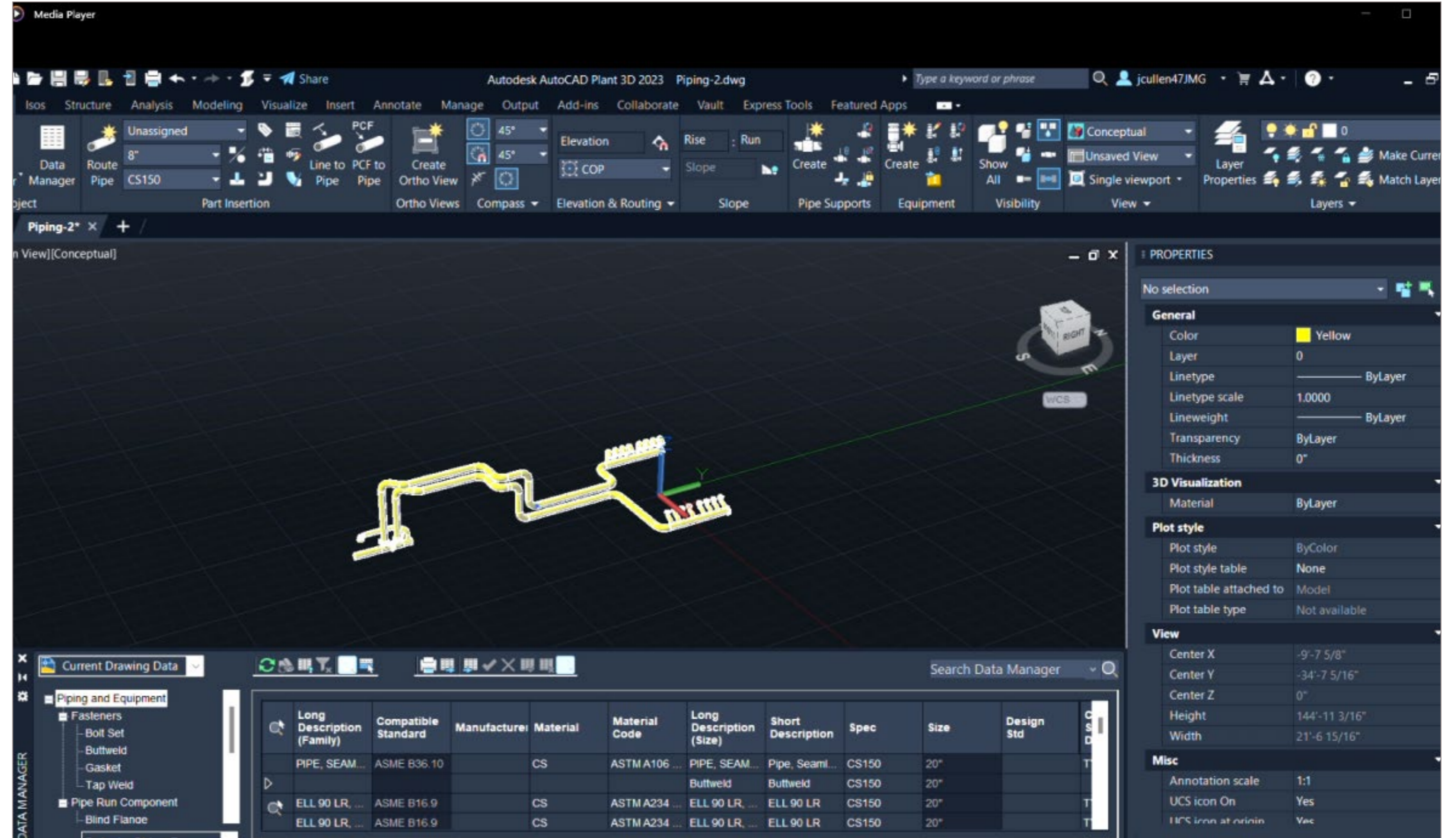
**SONGER.**  
**INNOVATION.**



## 3D MODELING

# Bringing Our Engineering Capabilities to Life.

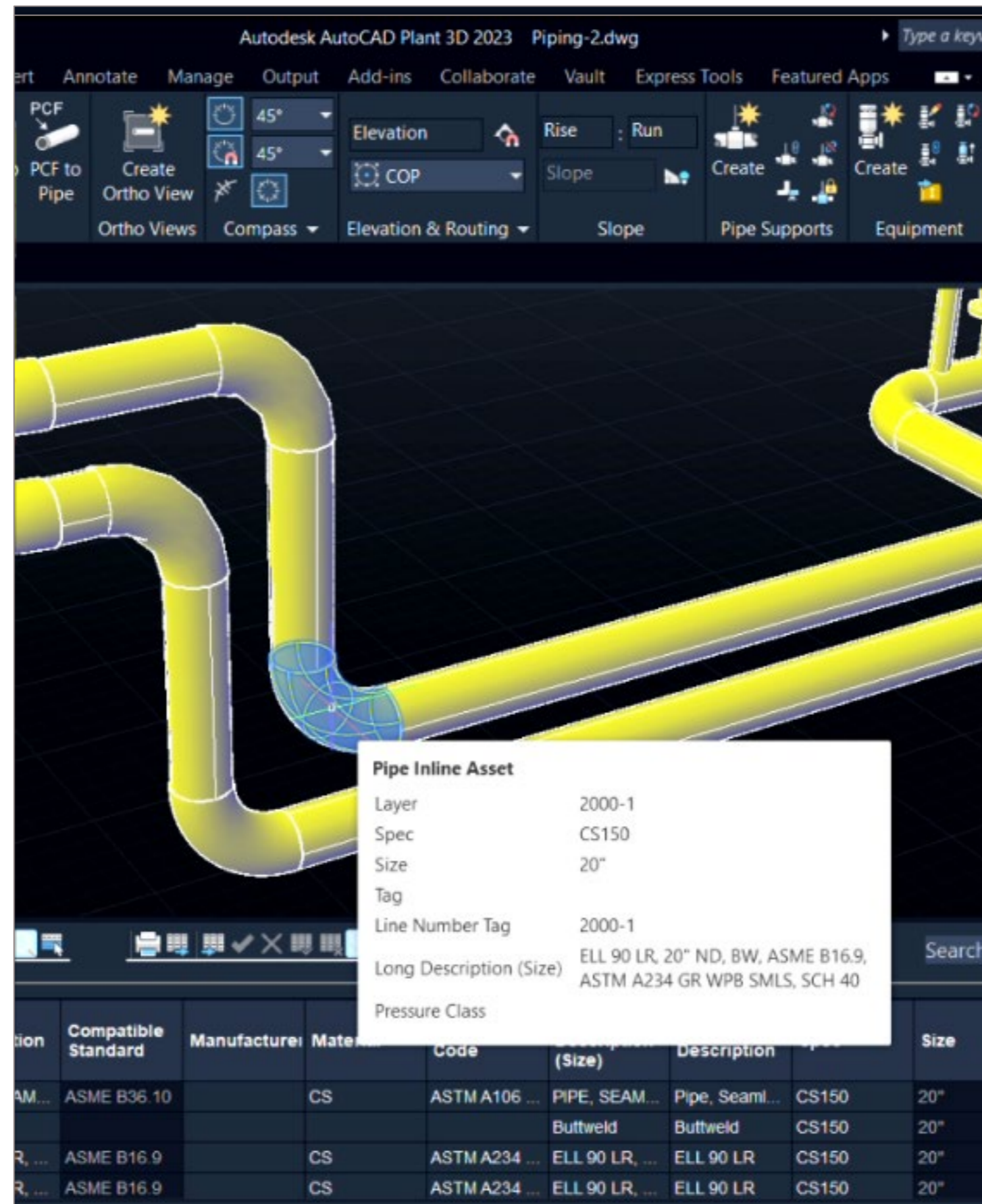
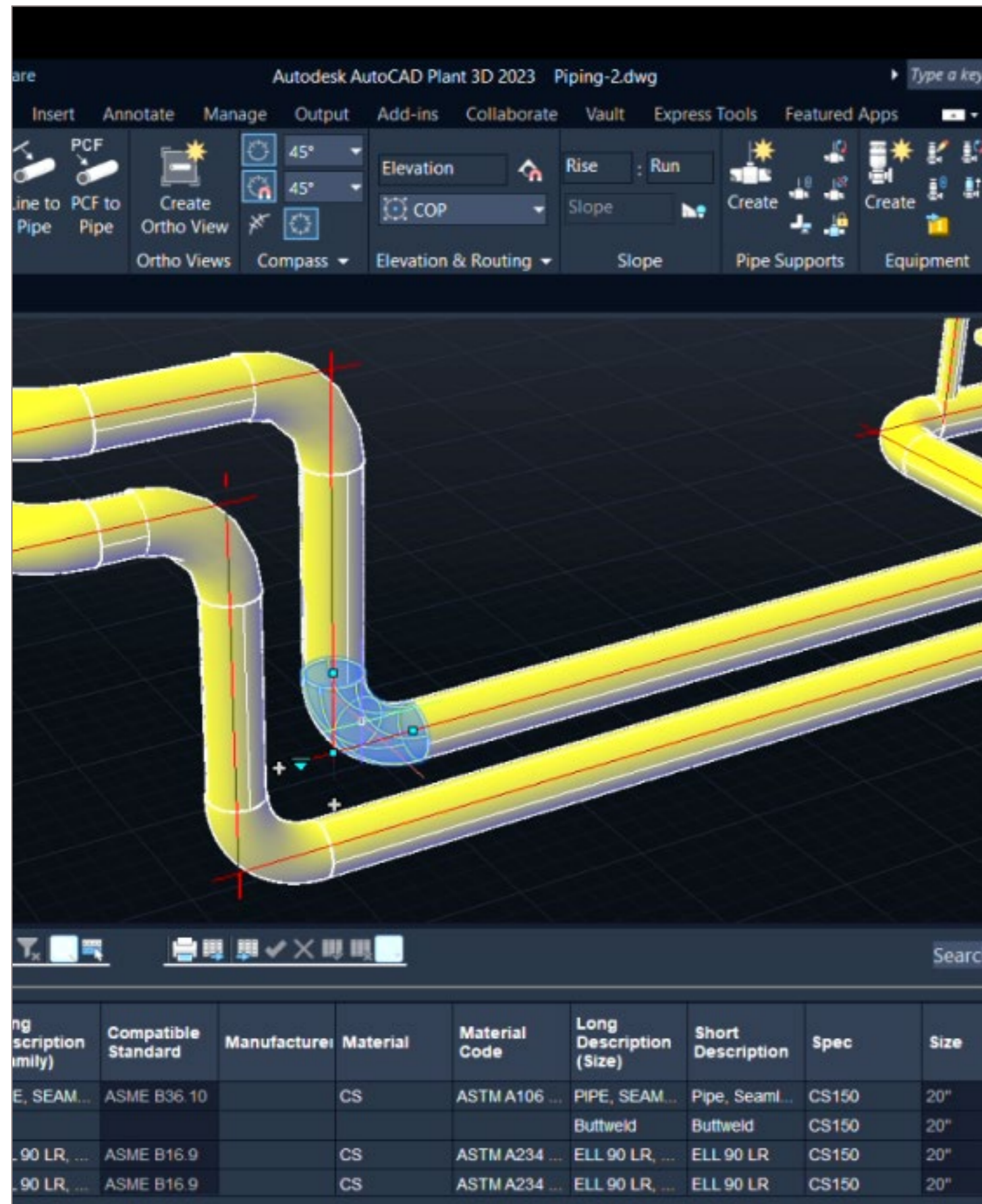
We extended the data management capabilities to small and large engineering projects. Our models provide a single-point interface for users to store and retrieve critical attributes about every component we're responsible for fabricating, installing, testing and maintaining.



**SONGER.**  
**INNOVATION.**

  
**SONGER**  
SERVICES

# MATERIALS MANAGEMENT



## Consolidation Multiple Data Sources.

Quickly Understand:

- Parts and Components
- Fabrication Specs
- Field Welds
- Exportable Data

**SONGER.**  
**INNOVATION.**





## OPPORTUNITY

# Your Start to Finish Construction Partner.

We're the hard-working Songer that the world's top-producing companies have partnered with for 20 years. Our transparent way of doing business, our meticulously documented approach to each job, our obsessive commitment to safety, and our eagerness to be at the forefront of new technology and industrial processes reveal a company that's built to last.

- Talent Driven
- Technology Focused
- Fully Integrated Capabilities

**SONGER.**  
**PROJECT READY.**



**SONGER.**  
**READY TO GO**  
**TO WORK.**

